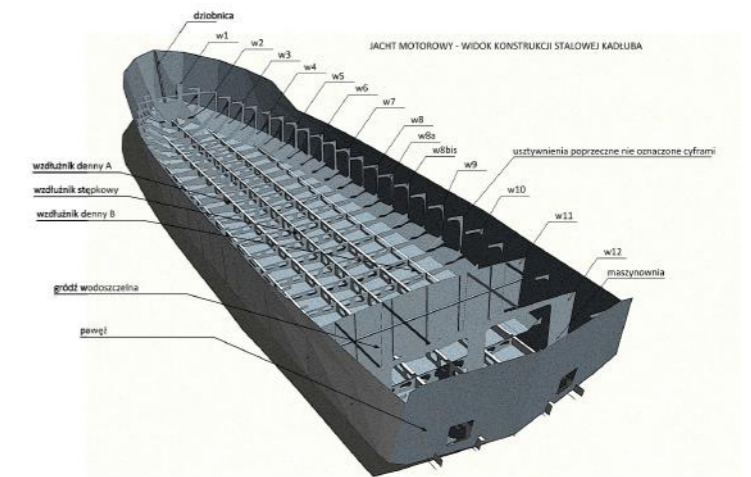


steel yacht concept



all steel hull design - 3D model erected from the tech. drawings



laser cut cardboard model of the framing



superstructure with the hull framing partially visible

STEEL YACHT DESIGN, superstructure design

BARTOSZEWSKI ARCHITEKTURA, Warszawa

04-06.2014

cooperation: shipbuilder Stefan Ekner
design, project, visualization

This interesting naval architecture project was conducted for a private partnership who was interested in building a all steel motor boat yacht that was due to mimic the appearance of 50's white cabin boats. The hull was designed by a shipbuilder Stefan Ekner. The yacht was indeed as a riverboat and was designed to incorporate numerous features ranging from sun deck, two bedrooms, a Personal water craft hangar and a boom, sunroofs. The hull configuration was predefined and the superstructure had to follow its geometry. The commission was tricky in a manner of adjusting chosen ascetic to existing hull while keeping the spirit of unique shape of 50' steel motorboat.

